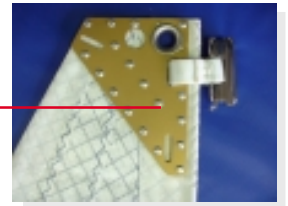
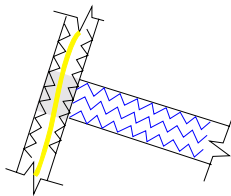


Standard Features

- ◆ Heavy gauge aluminum headboards with stainless steel liners and hand-sewn metal slug(s) or slide(s) depending on application.
- ◆ Battens conventional length and perpendicular to the leech.
- ◆ Luff and foot attachments attached with hand-sewn webbing.
- ◆ Reef rings are stainless steel / composite pressed rings.
- ◆ Corner rings are webbed Stainless Steel external rings with leather chafe guards.
- ◆ Batten pockets finished with our Internal Velcro system, but the Tradeswind specification is available.
- ◆ All seams will have 2 to 3 rows of 3-step stitching, depending on size.
- ◆ Challenge Sailcloth High Modulus Fabrics
- ◆ Patches are Block style.
- ◆ Polyester Leechline.
- ◆ Tell-tales at each batten pocket.
- ◆ Heavy Duty sailbag.



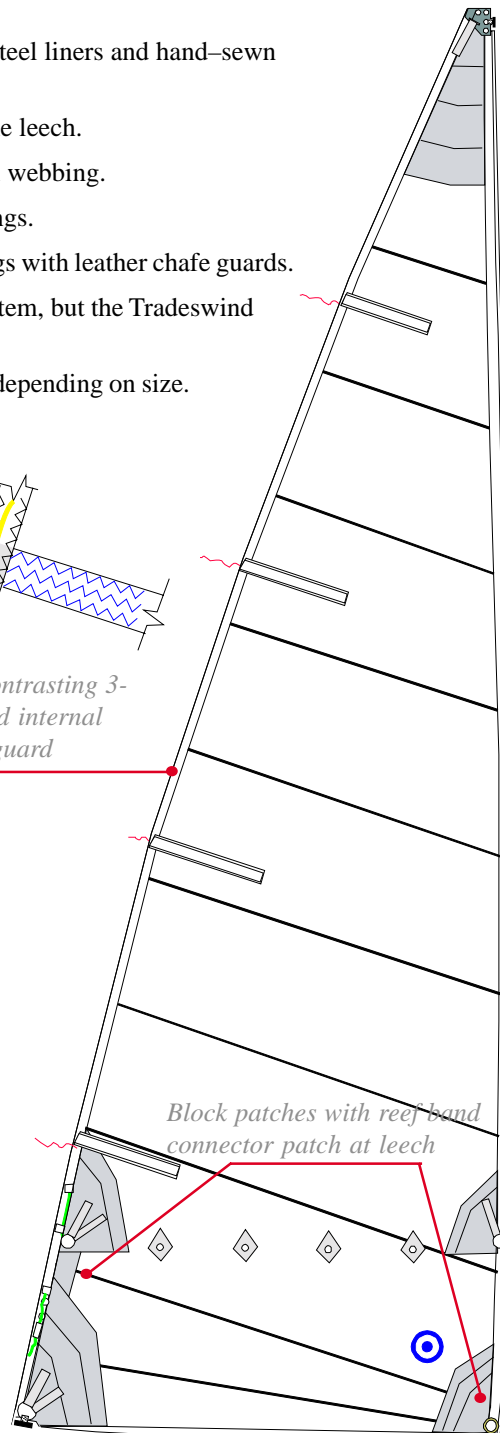
Extra strong double aluminum headboards featuring hand sewn metal slide(s) depending on application.



2 or 3 rows of contrasting 3-step stitching and internal leechline chafe guard

Optional Features

- ◆ One or more reefing points
- ◆ Full or Partial Length Battens
- ◆ Seamkote
- ◆ Tradewinds Specifications
- ◆ Draft stripes, numbers, and insignia
- ◆ Shelf, Flattener, and cunningham



Block patches with reef band connector patch at leech

External corner rings finished with leather and 'capped' webbing straps.



Quality, Service, Value

- ◆ Every sail we build comes with the assurance of a two year warranty of quality, service and value.
- ◆ If you ever need service, our consultants will direct you to the nearest of our worldwide network of Service lofts.
- ◆ No matter where in the world your sailing takes you, we are there to help.
- ◆ For further information, contact your Neil Pryde consultant or visit us at: www.neilprydesails.com or 203.874.6984