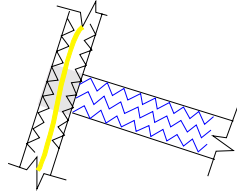


### Standard Features

- ◆ Corner rings are webbed stainless steel external rings or pressed rings with load straps
- ◆ All seams will have 2 to 3 rows of 3-step stitching, depending on size
- ◆ Patches block style
- ◆ Polyester Leech and foot lines
- ◆ Tell-tails
- ◆ Heavy Duty sailbag

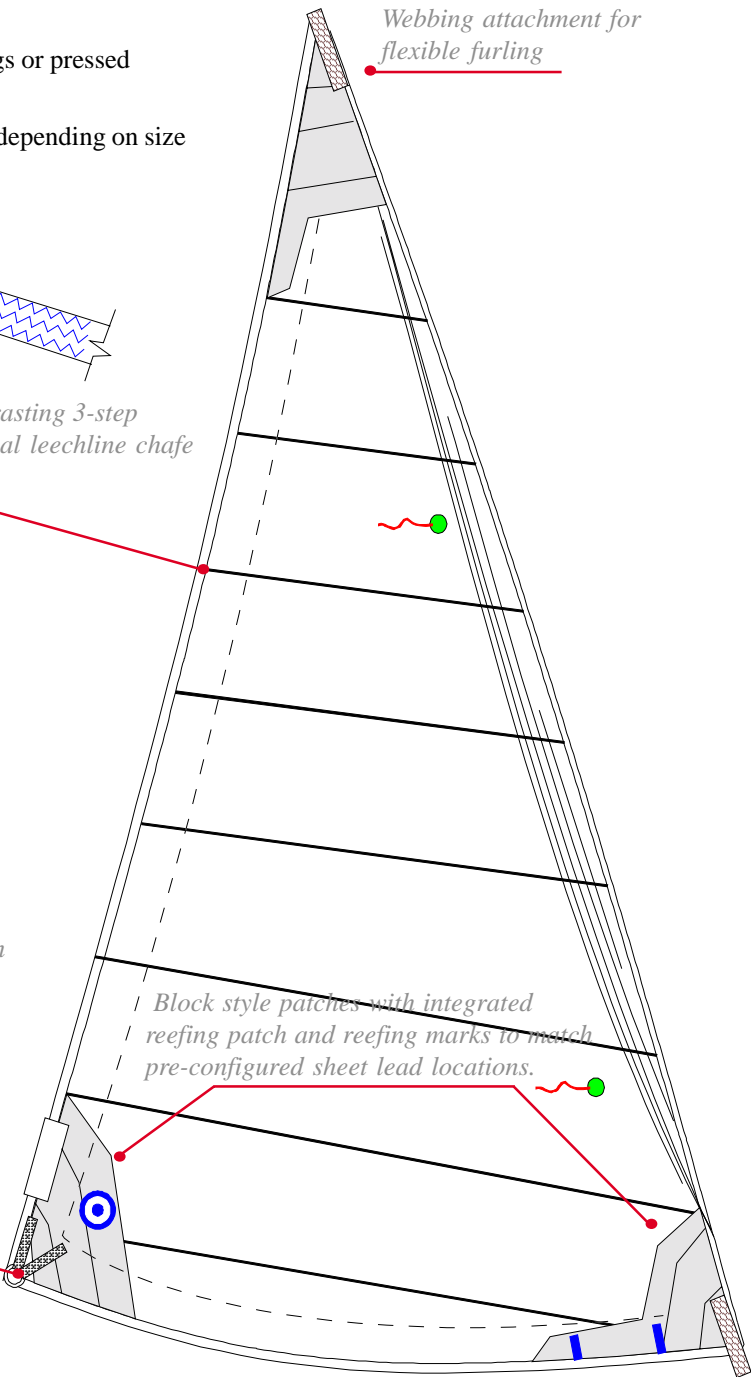


2 or 3 rows of contrasting 3-step stitching and internal leechline chafe guard

### Optional Features

- ◆ Seamkote
- ◆ Sail numbers
- ◆ Draftstripes
- ◆ [Tradewinds Specifications](#)
- ◆ [Multi-Track Foam Luff System](#)
- ◆ U.V. sacrificial cover in Sunbrella Acrilon or lightweight U.V. fabric.

External stainless ring covered with handsewn leather.



### Quality, Service, Value

- ◆ Every sail we build comes with the assurance of a two year warranty of quality, service and value.
- ◆ If you ever need service, our consultants will direct you to the nearest of our worldwide network of Service lofts.
- ◆ No matter where in the world your sailing takes you, we are there to help.
- ◆ For further information, contact your Neil Pryde consultant by dialing 1-203-874-6984 or <http://www.neilprydesails.com>