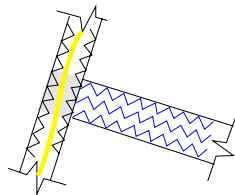


Standard Features

- ◆ Radial layout allows "step-down" construction providing a reefable headsail in a variety of composite cruising fabrics
- ◆ All seams will have 1 to 3 rows of 3-step stitching, depending on size
- ◆ Corner rings are webbed stainless steel external rings with leather chafe patches or doubled webbing straps for furling flexibility
- ◆ Patches Fan/Radial type with buffers along foot and leech
- ◆ Sails include draft stripe
- ◆ Polyester or Spectra leech & foot lines
- ◆ Tell-tails and one tell tail window
- ◆ Heavy Duty sailbag



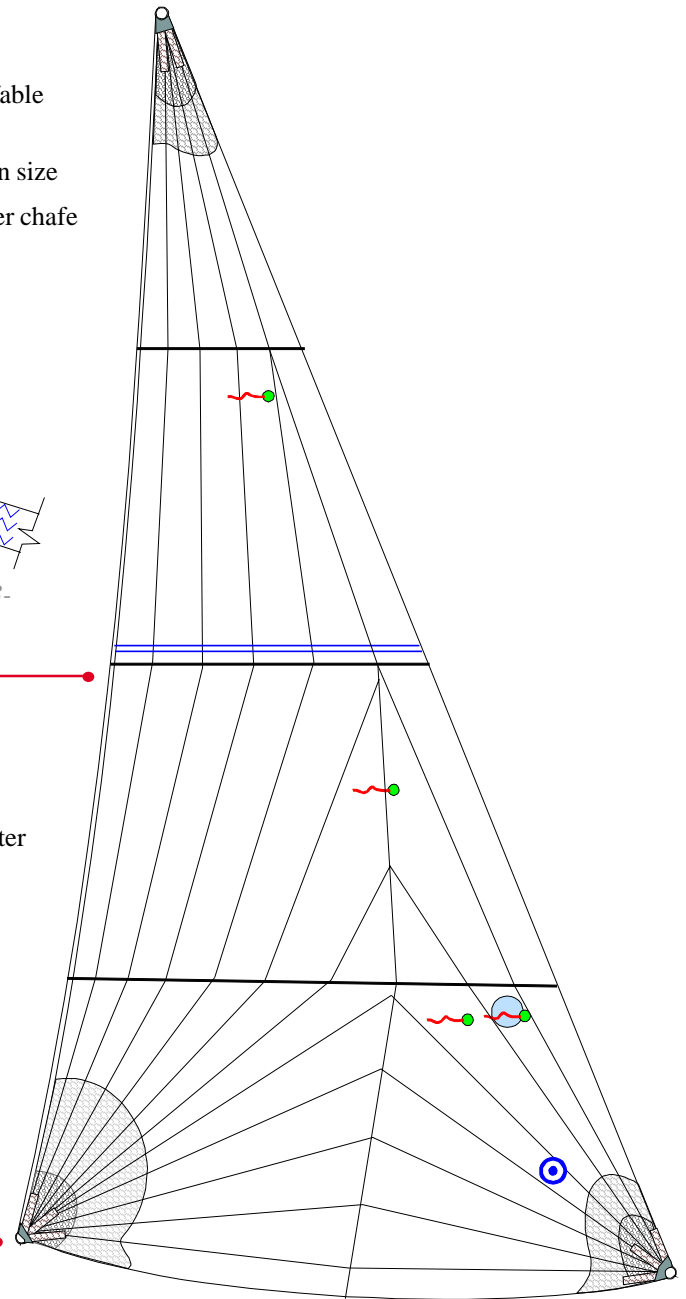
2 or 3 rows of contrasting 3-step stitching and internal leechline chafe guard

Optional Features

- ◆ U.V. sacrificial cover either in Acrilon or light weight u.v. polyester
- ◆ [Multi-Track Foam Luff System](#)
- ◆ Seamkote
- ◆ [Tradewinds Specifications](#)
- ◆ Sail numbers
- ◆ [Up and over Leechline](#)



Strapped-in rings for ultimate durability.



Quality, Service, Value

- ◆ Performance Cruise genoas come with the assurance of a two year warranty of quality, service and value.
- ◆ If you ever need service, our consultants will direct you to the nearest of our worldwide network of Service lofts.
- ◆ No matter where in the world your sailing takes you, we are there to help.
- ◆ For further information, contact your Neil Pryde consultant by dialing 1-203-874-6984 or <http://www.neilprydesails.com>