

Full Battened Main

The Sail

The advantages of owning a Full Battened Main are many. The sail is very easy to handle, the battens stack neatly on the boom when the sail is being lowered, and performance is dramatically improved as the battens maintain the sail's smooth aerofoil shape in both light and strong winds. Additionally, the longevity of the mainsail is improved because the full length battens prevent the sail flogging which is one of the worst enemies of all sail cloth.

Proven Sail Design

On a Full Battened Main there are various options for securing the battens in the batten pockets. Among these options are the Velcro® or tie-in securing systems that allow secure adjustment of the batten tension and are very clean, and with almost no windage. These features are totally reliable and easy to use, making handling and fitting the battens easier than ever before.

Performance

The addition of full length battens help the mainsail retain a more efficient shape over a much wider wind range. They also enable the sail to be built with additional area on the

leech, thereby improving light air performance

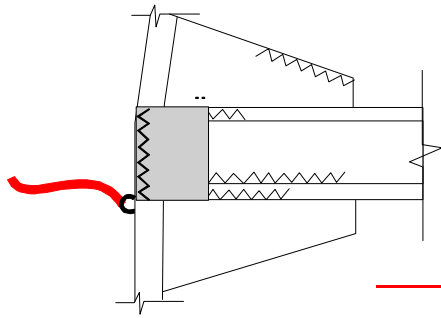
How to Make a Good Thing Better

The Full Battened Main stows easily when sailing into your mooring, and the addi-

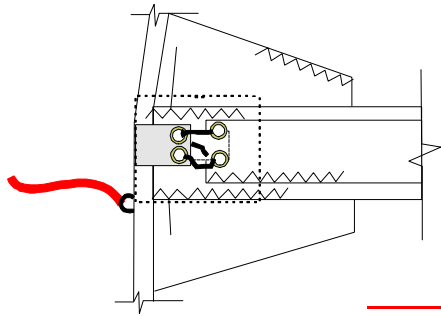


The full length battens create a smooth airfoil that is more easily handled and longer lasting than a traditional main.

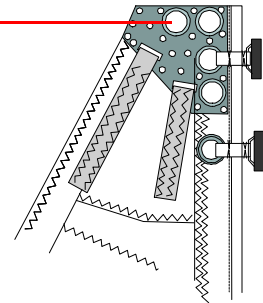
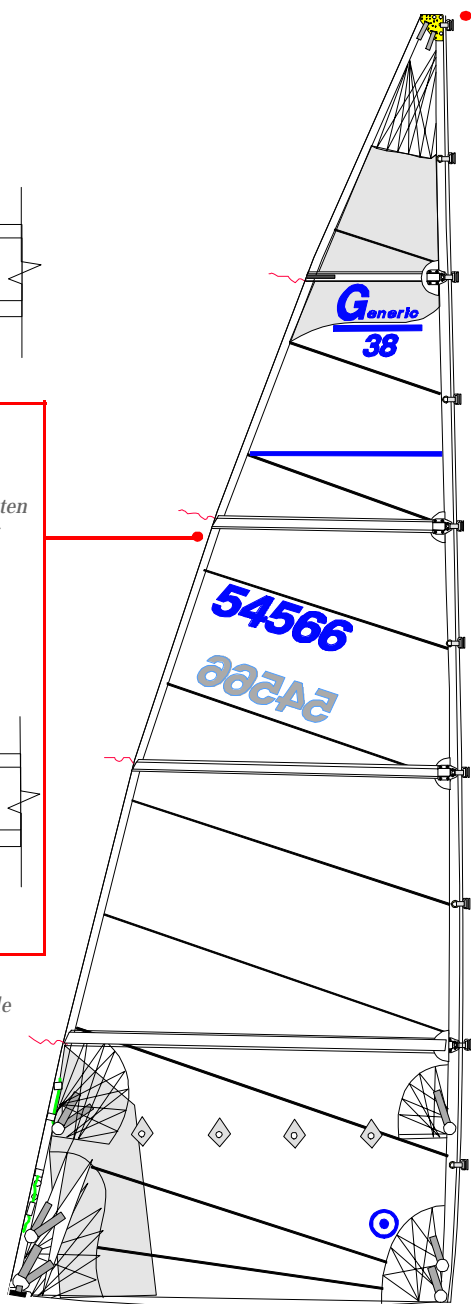
tion of the lazyjacks makes docking even simpler, no matter how short you are on crew.



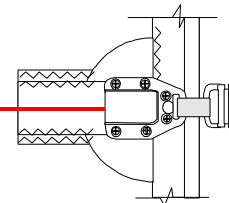
"C" type webbing enclosure has both low windage and strength even after constant batten loading. Used with 'aftermarket' luff loading batten adjusters.



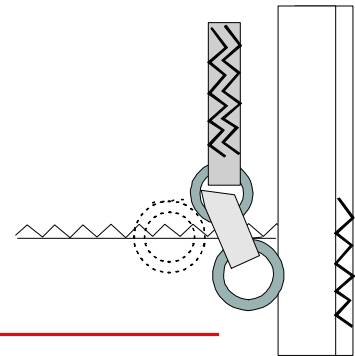
"B" type or "Tradewinds spec." adjustable tie batten enclosure.



Super strong double aluminum headboards featuring hand sewn slide(s) and webbing straps.



Heavy duty A-303 batten-stop with All-Slip slide.



Luff rings are externally sewn to sail for ease of use in reefing conditions.

Quality, Service, Value

Every sail we build comes with the assurance of a two year warranty of quality, service and value. Our consultants are trained to listen to your requirements; advice and information are only a phone call away.

If you ever need service, our consultant will direct you to the nearest of our worldwide

network of Service lofts. No matter where in the world your sailing takes you, we are there to help.

For further information, contact your nearest Neil Pryde consultant.

Photos and type may describe features not applicable to all sizes of sails. Our ongoing development program may change features and specifications without notice.

Neil Pryde Sails International Sales and Design Office
354 Woodmont Rd #18, Milford, Conn, USA.
Tel: (203) 874-6984
Fax: (203) 877-7014
E-Mail: admin@neilprydesails.com
Web: <http://www.neilprydesails.com>

