

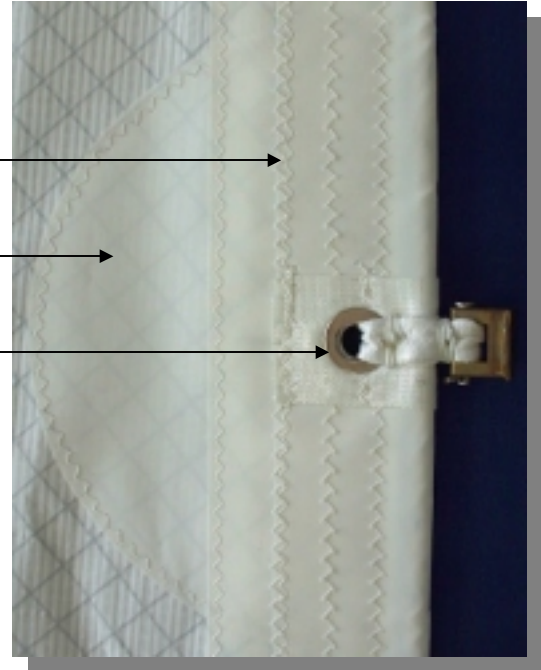
Overview

We call our specific offshore cruising or working boat constructions, Tradewinds Specifications. These details were developed in Hawaii for charter boat use in the Moloki Channel and under the supervision of Geoff Bourne and Barry Spanier. These additional finishing standards ensure that our sails are capable of withstanding the most hostile of sailing conditions for prolonged periods of time. With these additional features you are guaranteed the hardest wearing, toughest working sails available anywhere in the world.

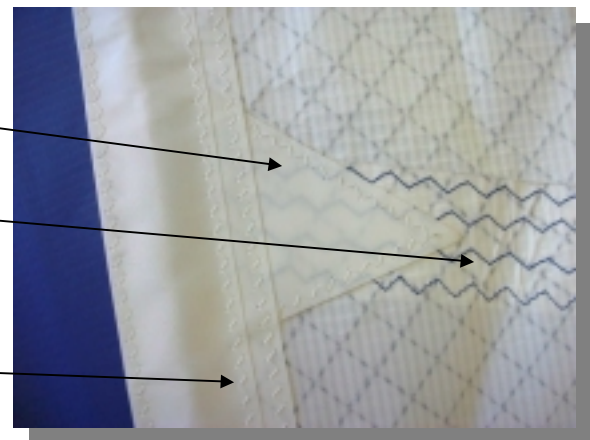
Standard Tradewinds Features

All of these features are in addition to our industry setting standards in sail finishing

- Double luff, leech and foot tapes of staggered widths; providing unparalleled durability in high use conditions
- Half-moon reinforcement patches stitched and glued under each slide or jib hank.
- Slides and hanks attached to sail with hydraulically pressed rings or heavy duty stainless eyelets, bedded in a double wrapped 50mm heavy gauge webbing strap.
- Reef / Head slides stainless steel or moly impregnated Nylon depending on app
- Heavy gauge aluminum headboard with webbing load straps
- Aluminum leech line cleats.
- Extra heavy, self-enclosed batten pockets; finished based on batten hardware



- Machine **and** hand sewn heavy duty Nylon or Spectra load straps on all rings.
- Leech seam reinforcement patches on cross-load seams.
- Seams extra wide with multiple rows of "3-step" stitch and one weight heavier (V-138) than normal U.V. resistant thread.
- Spectra or oversize Dacron leech lines self enclosed to prevent chafing of seams
- Double tapes of staggered sizes



Quality, Service, Value

- Every sail we build comes with the assurance of a two-year warranty of quality, service and value.
- If you ever need service, our consultants will direct you to the nearest of our worldwide network of Service lofts.
- No matter where in the world your sailing takes you, we are there to help.
- For further information, contact your Neil Pryde consultant or visit us at: **www.neilprydesails.com**

Drawings and type may describe features not applicable to all sizes of sails. Our ongoing development program may change features and specifications without notice.

Neil Pryde Sails International			
354 Woodmont Rd. #18 • Milford, CT • 06460 • U.S.A. Tel: 203.874.6984 • Fax: 203.877.7014 • Email: admin@neilprydesails.com			
Drawing Name:	Tradewinds Specifications.doc		
Date:	14-Oct-01	Scale:	Not to scale
Drawn by:	Bp	Revision:	
Copyright Neil Pryde Sails Int. 2001-02			