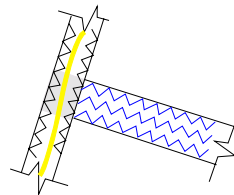
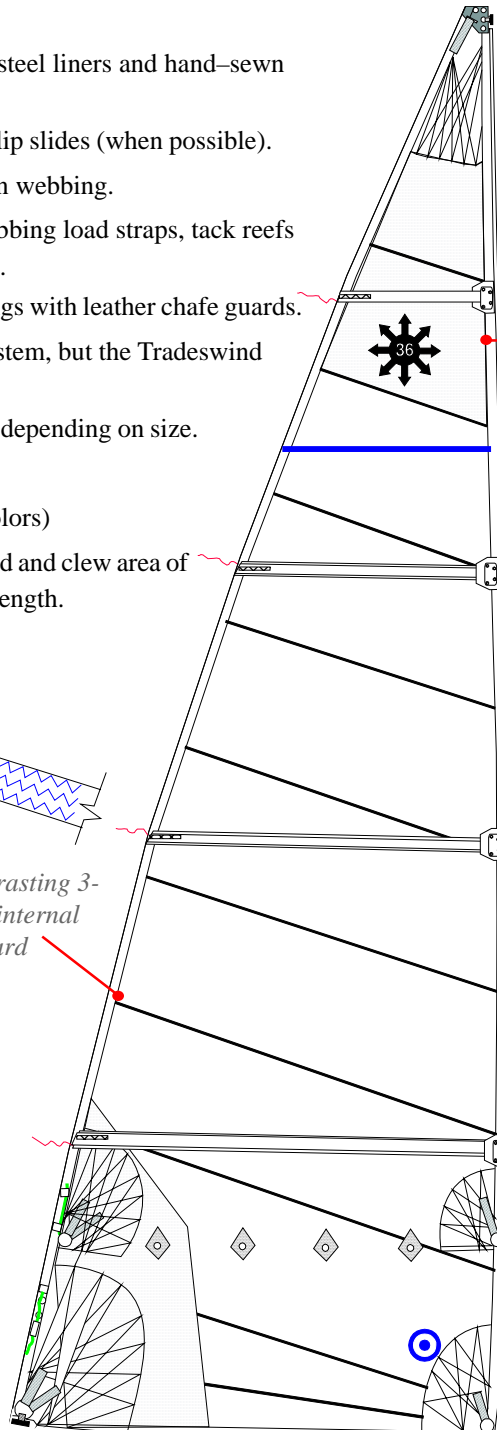


Standard Features

- ◆ Heavy gauge aluminum headboards with stainless steel liners and hand-sewn metal slug(s) or slide(s) depending on application.
- ◆ Full length battens fitted with A303 stops and All-slip slides (when possible).
- ◆ Luff and foot attachments attached with hand-sewn webbing.
- ◆ Reef rings are stainless steel pressed rings with webbing load straps, tack reefs equipped with dual "dogbone" stainless steel rings.
- ◆ Corner rings are webbed Stainless Steel external rings with leather chafe guards.
- ◆ Batten pockets finished with our Internal Velcro system, but the Tradeswind specification is available.
- ◆ All seams will have 2 to 3 rows of 3-step stitching, depending on size.
- ◆ Challenge Sailcloth High Modulus Fabrics
- ◆ Sails include; draft stripe and insignia (choice in colors)
- ◆ Yachts over 30 feet (9.14mt) will have a two-ply head and clew area of which each will be approximately 22% of the leech length.
- ◆ Patches will be of the Fan/Radial type.
- ◆ Polyester or Spectra Leechline.
- ◆ Tell-tales at each batten pocket.
- ◆ Heavy Duty sailbag.



2 or 3 rows of contrasting 3-step stitching and internal leechline chafe guard



Super strong double aluminum headboards featuring hand sewn metal slide..

Additional two-ply construction



Heavy duty A-303 batten-stop with All-Slip slide.



Luff rings are equipped with 'dog bones'

Optional Features

- ◆ One or more reefing points
- ◆ [Aftermarket batten/track systems](#)
- ◆ Seamkote
- ◆ [Tradewinds Specifications](#)
- ◆ Shelf, Flattener and Cunningham
- ◆ Sail Numbers

Quality, Service, Value

- ◆ Every sail we build comes with the assurance of a two year warranty of quality, service and value.
- ◆ If you ever need service, our consultants will direct you to the nearest of our worldwide network of Service lofts.
- ◆ No matter where in the world your sailing takes you, we are there to help.
- ◆ For further information, contact your Neil Pryde consultant or visit us at: <http://www.neilprydesails.com>